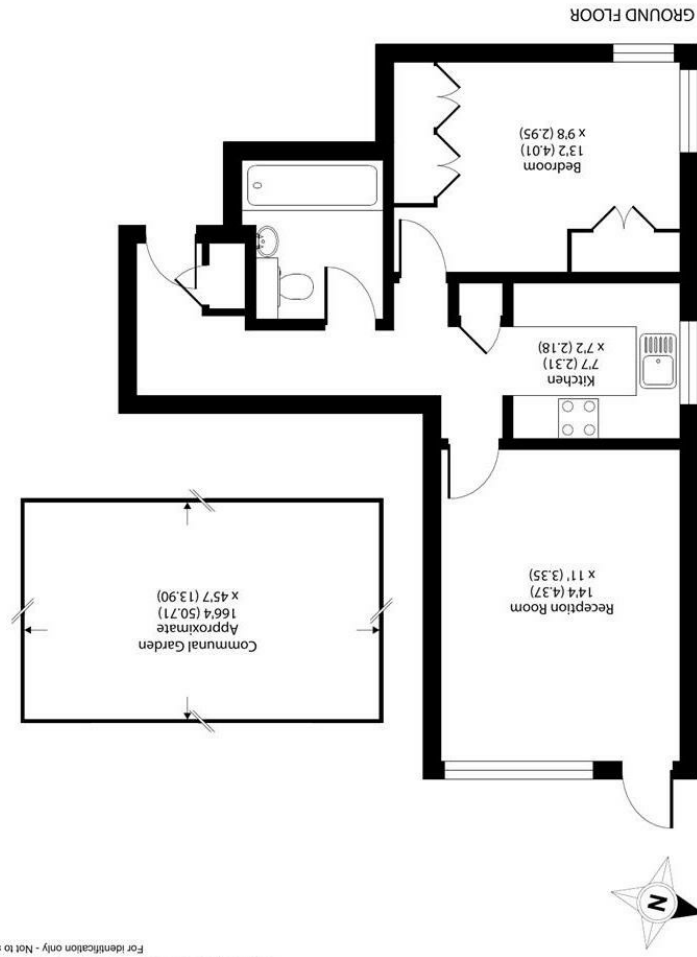


**Important Information**  
 All appliances listed in these details are only 'as seen' and have not been tested by Gibson Lane, nor have we sought certification of warranty or service, unless otherwise stated. Measurements, areas and distances are approximate. Floor plans and photographs are for guidance purposes only and must not be relied upon for any purpose. These details are offered on the understanding that all negotiations are made through this company. Neither these particulars, nor verbal representations, form part of any offer or contract, and their accuracy cannot be guaranteed.

Energy Efficiency Rating	Environmental Impact (CO <sub>2</sub> ) Rating
 A B C D E F G	 A B C D E F G

RICS Property Measurement  
 Floor plan produced in accordance with RICS Property Measurement Standards incorporating International Property Measurement Standards (IPMS Residential). © Gibson Lane, 2022.



34 Richmond Road  
 Kingston upon Thames  
 Surrey  
 KT2 5ED  
 www.gibsonlane.co.uk  
 Tel: 020 8546 5444



**Galsworthy Road**  
 Kingston upon Thames KT2 7BL



## Galsworthy Road

Kingston Upon Thames KT2 7BL

Guide Price £325,000

A well presented one double bedroom apartment with direct access onto the beautifully landscaped communal gardens, ideally situated within a short walk from Norbiton train station.

### Description

An immaculately presented one double bedroom apartment situated on the ground floor of this well managed block and ideally positioned within close proximity to Norbiton Station, Richmond Park and Kingston Hospital. This charming flat offers plenty of natural light with bright rooms throughout and lovely views of the landscaped communal gardens which is accessed directly from the living room. The property provides fantastic internal accommodation and comprises a large double bedroom with built in wardrobes, bathroom, fitted kitchen and a spacious east facing lounge which leads directly onto the beautiful landscaped 166' x 45' communal gardens. Viewings are highly recommended to see what this lovely apartment has to offer.

### Situation

Galsworthy Road is situated in a highly sought after North Kingston location within close proximity of Richmond Park. Conveniently positioned for Norbiton station giving direct access into Waterloo and the A3 which serves both London & the M25. Kingston town centre with its array of shops, restaurants and bars is a short distance away, as well as Kingston Hospital.

**Tenure:** Leasehold

**Local Authority:** Kingston upon Thames

